



1115EPON

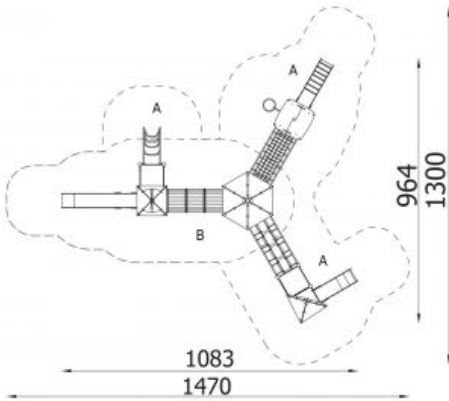


Description

1 tall castle tower, 1 tower with envelope roof, 1 tower with gable roof, 1 tower with triangular roof, 2 square platforms, 1 long slide, 1 deep slide, 1 slide 104, 1 tunnel bridge, 1 ladder bridge, 1 tubular bridge, 1 spiral ladder, 1 arc ladder, 9 safety HDPE boards with decorative cuts, 2 walls with decorative cuts, 5 triangular landings, 3 square landings, 4 entrance, 6 climbing bars, 2 metal bars over the slide.

Model type	Modulair
Serial number	1115EPON
Equipment name	Castle Tower 15 1115

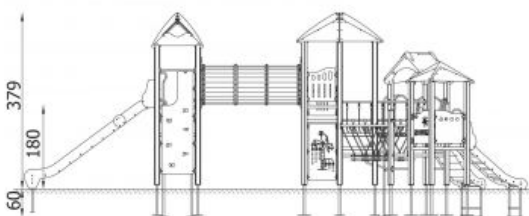
Join the action!



Product line	Action Orbis Wood Modulair
Age range	3 - 12
Unit measurements	1030cm x 1110cm x 403cm
Required surface area	1385cm x 1630cm
Impact area	108m ²
Free height of fall	200cm

Material

Bearing posts have a diameter of 12 cm and are made of glue-laminated, round, wood, fixed 10 cm above the ground level with metal anchors.
 Antislip platforms.
 Roofs, security elements and panels are made of HDPE (high durable polyethylene) boards with pattern cuttings.
 Sliding surface is made of acid-proof, stainless steel sheet.
 Ropes made of polypropylene with a steel core, thickness 16-18 mm, vandalism and UV resistant.
 All fittings and connectors are weather and UV resistant.
 Wood elements are oiled or covered with a colour glaze.
 Steel elements are protected against corrosion by zinc layer and powder paint coating.



Heaviest part	90kg
Largest part	350cm - 80cm
Spare parts	Available
Installation time without groundwork	18 hour(s) / 3 person(s)
Special tools	Included

Anchoring

Poles are fixed in the ground at a depth of 60 cm on steel anchors. Concrete according to the assembly instructions.

Remarks

This equipment is also available with hot dip galvanized posts. Prices on request.